

A400

Whether you're serving coffee in a specialty coffee shop or a restaurant, the A400 can handle every situation with ease. This compact but premium coffee machine comes with an automatic cleaning system and unique interactive touch screen which is configurable to your needs, making it easy to operate no matter who uses it. And with options like FoamMaster™ allowing you to prepare the perfect hot or cold foam, you can create a wide range of drinks that go above and beyond expectations.

RECOMMENDED DAILY OUTPUT

Cups per Day: Up to 100



CLEANMASTER
Fully automatic
cleaning process meeting
highest hygiene standards



TOUCH SCREEN
Practical 8-inch touch screen
for efficient easy operation



FOAMMASTER™
for milk foam the way
a Barista would make it

FRANKE

MAKE IT WONDERFUL

YOUR A400: CONFIGURED TO YOUR PREFERENCES

1 A400 FEATURES

- Bean hoppers/ Bean grinders: 2 x 2.6 lbs, lockable
- 1 powder dosing system (for chocolate and chai powder), lockable
- Cup sensor

Optional Features:

- Second powder dosing system (for chocolate and chai powder), lockable
- Coffee grounds chute

2 MILK SYSTEM

- FoamMaster™ (FM): hot and cold milk and milk foam, individually adjustable consistency, integrated cleaning system

Special Order:

- Milk system (MS): hot and cold milk and warm milk foam, exact dosing via milk pump

2 CLEANING SYSTEM

- CleanMaster (CM): fully automatic cleaning system with integrated cleaning cartridge. For outstanding hygiene and unbeatable simplicity, efficiency, and convenience.

Special Order:

- EasyClean (EC): automatic cleaning system with manual addition of the cleaning fluid. Perfect hygiene in just a few steps.

3 ACCOUNTING SYSTEM


- Can be used for various payment methods, Mastercard or Visa cards, Apple Pay and NFC (near field communication) payment methods

4 CUP WARMER


- With four heatable trays.



COLORS

 Black/chrome

Special Order:

 Anthracite/chrome

FLEXIBILITY

Our product portfolio allows various assembly options – tailored to your needs.



MAKE IT WONDERFUL

Franke Kaffeemaschinen AG
cs-info.ch@franke.com

Franke Coffee Systems GmbH
cs-info.de@franke.com

Franke Coffee Systems Americas
cs-coffeesales.us@franke.com

Franke Coffee Systems UK
sales@Frankecoffeesystems.co.uk

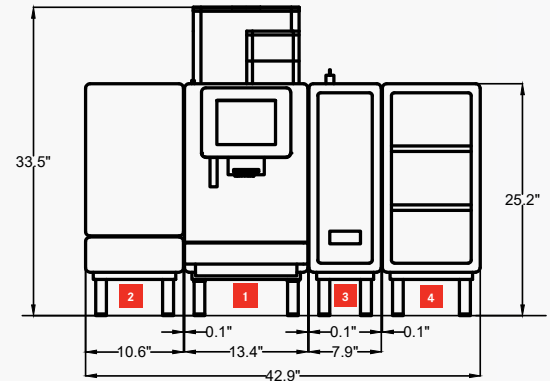
800.310.5710
coffee.franke.com

TECHNICAL DATA

MACHINE MODELS

1 A400 FM CM

Electrical Connection	208V (30A)
Dimensions	13.4 in x 33.5 in x 23.6 in
SU05 CM	120V (15 A)
Dimensions	10.6 in x 25.2 in x 18.7 in (W / H / D)
Weight (empty)	approx. 168 lbs (FM CM incl. SU05 CM)
Colors	Black or Anthracite

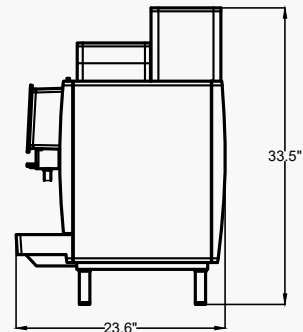


L6-30R



WATER QUALITY REQUIREMENTS

Aroma	Fresh and pure taste, with no perceptible aroma
Color	Clear
Total Hardness	70 - 140 ppm (mg/l) 4-8 gpg
Carbonate hardness	3 - 6° dH CH (carbonate hardness) 50 - 105 ppm (mg/l)
Acid content/ph value	6.5 - 7.5 pH
Chlorine content	< 0.5 mg/l
Chloride content	< 30 mg/l
TDS	30 - 150 ppm (mg/l)
(Total dissolved solids)	
Electrical conductivity	50 - 200 µS/cm (microsiemens)
Iron Content	< 0.3 mg/l
Water pressure	80 - 800 kPa (0.8 - 8 bar)
Flow rate	> 0.1 l/sec
Water temperature	< 25°C



WATER CONNECTION AND DRAIN

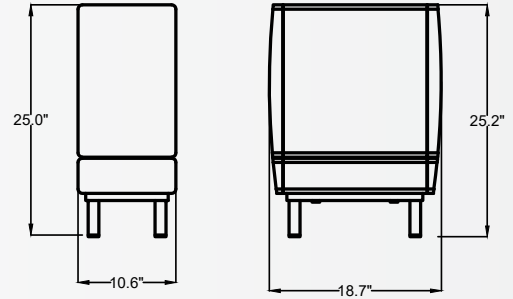
Water connection	3/8" compression fitting, L = 59 in
Drain hose	Dia = 0.75 in, L - 78.7 In

ADD-ON UNITS

2 REFRIGERATION UNIT

SU05 CM (5I) (1 Gallon Milk)

Electrical connection	120V (15 A)
Dimensions	10.6 in x 25.2 in x 18.7 in (W / H / D)
Weight (empty)	approx. 53 lbs
Compatible with	A400 FM CM
Colors	Black



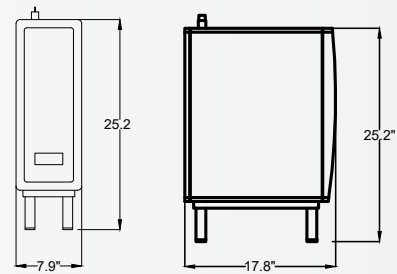
5-15R



3 ACCOUNTING SYSTEM

AC 200

Accounting systems	Cashless payment system
Electrical connection	120V (10 A)
Dimensions	7.9 in / 25.2 in / 17.8 in (W / H / D)
Weight (empty)	approx. 40 lbs
Compatible with	A400 FM CM
Colors	Black



5-15R



ACCOUNTING SYSTEM

AC125CL

Accounting systems	Cashless payment system
Electrical connection	120V (10 A)
Dimensions	5 in x 6 in x 12 in (W / H / D)
Weight (empty)	approx. 4 lbs
Compatible with	A400 FM CM
Colors	Black



5-15R



ADD-ON UNITS

4 CUP WARMER

Electrical connection

Dimensions

Weight (empty)

Compatible with

Colors

CW

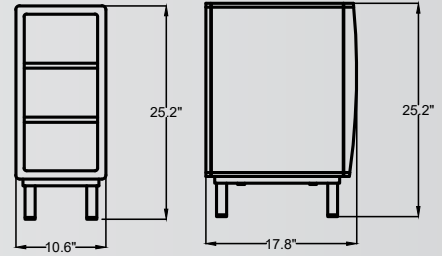
120V (15 A)

10.6 in x 25.2 in x 17.9 in (W / H / D)

approx. 44 lbs

A400 FM CM

Black



5-15R



ETL LISTED CONFORMS TO
UL STD 197 CERTIFIED TO
CSA STD C22.2
NO 109



CONFORMS TO
NSF STD 4

3123505